

This manual is for reference and historical purposes, all rights reserved.

**This page is copyright© by M. Butkus, NJ.**

This page may not be sold or distributed without the expressed permission of the producer

I have no connection with any camera company

On-line camera manual library

This is the full text and images from the manual. This may take 3 full minutes for the PDF file to download.

**If you find this manual useful, how about a donation of \$3 to: M. Butkus, 29 Lake Ave., High Bridge, NJ 08829-1701 and send your e-mail address so I can thank you. Most other places would charge you \$7.50 for a electronic copy or \$18.00 for a hard to read Xerox copy.**

**This will allow me to continue to buy new manuals and pay their shipping costs.**

**It'll make you feel better, won't it?**

**If you use Pay Pal or wish to use your credit card,  
click on the secure site on my main page.**

# Voigtländer

MODEL  
2



# RANGEFINDER BESSA

## VOIGTLANDER . . . THE WORLD'S FINEST CAMERAS

The know-how which makes the name VOIGTLANDER synonymous with the world's finest cameras had its origin nearly two centuries ago. In 1756, long before the camera was invented, the firm of Voigtlander was world-famous for lenses and optical precision instruments. This firm carried it to world-wide expansion and today its cameras rank among the finest made. The Voigtlander trade-mark signifies that there is a traditional background behind every Voigtlander camera which never permits compromise with quality.

**Voigtländer**

2 $\frac{1}{4}$ " x 3 $\frac{1}{4}$ "

**RANGEFINDER**

**BESSA**      **MODEL 2**

**VOIGTLANDER & SON • FOUNDED IN 1756**



The new  $2\frac{1}{4} \times 3\frac{1}{4}$  Rangefinder Bessa Model 2 is the fulfillment of every amateur photographer's dream — a camera possessing every single refinement essential for perfect photography, yet of such sensible design that the external shape alone proves that a camera with a coupled rangefinder can still be very compact and light.

Every part from the rangefinder (#1) to the trigger shutter release (#2), is built into this streamlined camera.

Perfect focusing is simplicity itself with the built-in rangefinder (combined range-viewfinder). Looking through it, you will see a yellowish circle in the center of a clearly outlined viewfinder image. A double outline of the subject will be seen in the circle as long as the distance is incorrectly set. A turn of the focusing knob (#3), and in a jiffy the two images coincide, setting the distance automatically for maximum sharpness.



An innovation in the Bessa is its unique construction, the result of generations of practical experience. It is cleverly designed, so that the controls are located right at the fingertips.

Two fingers are used for focusing — the eye checks the rangefinder and the index finger rests on the shutter release. The camera is firmly held in both hands ready for use, while critical focusing of the subject is followed through every movement, so that the picture can be taken at just the proper instant.

Shutter speeds can be instantly changed by a slight twist of the outer rim, while the lens stops are changed by a mere flick of the indicator.

Fast lens speed permits excellent pictures under normal indoor lighting conditions and even theatre and night photographs, without resorting to the use of a flash-gun.

The  
very  
finest  
workmanship

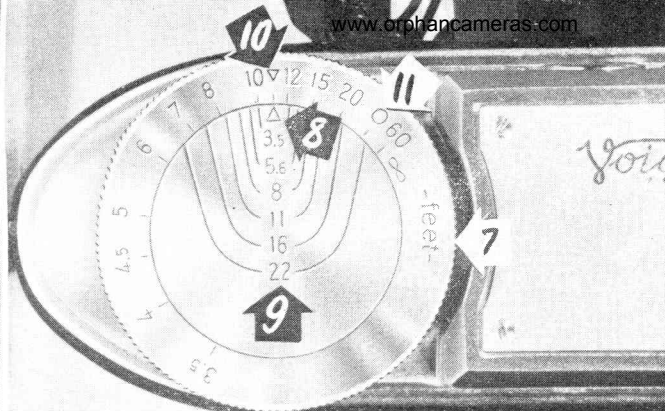


Shutter speeds range from one second to 1/400th, in addition to bulb. If the photographer wishes to appear in the photograph, it is merely necessary to adjust the delayed action shutter release (#5). Between operation of the release and the opening of the shutter, about twelve seconds will elapse — time enough to take one's place in the group.

The Compur Rapid shutter has built-in flash synchronization, too. Practically every popular flash gun manufacturer markets a model suitable for use with the Bessa. The battery case and reflector are attached to the camera by means of a bracket; the connecting cord is simply plugged into the coupling on the shutter, and the camera is ready for action.

A socket for use with a flexible wire release is provided directly above the trigger release (#4). This is threaded to accommodate the standard compur release, available in various sizes.

Compur Rapid  
shutter  
with delayed  
action and  
built-in flash

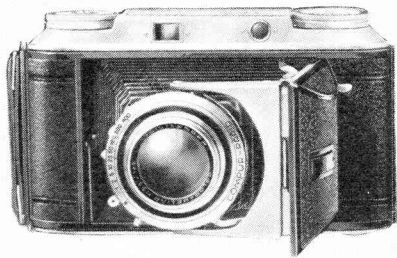


The depth of field from . . . to . . . can be instantly read for any aperture, on the convenient scale located in the large focusing knob (#7). Engraved on the inner fixed circle (#8) is a small triangle which serves to indicate the distance in feet to which the camera has been set. Below the small triangle are various lens openings from each of which a pair of lines (#9) project to the rotating ring indicating the extent of depth of field. *Example:* Distance set at 15 feet with lens opening f5.6, the depth of field extends from 12 feet to 20 feet while at f22, the depth of field reaches from 8 feet to infinity, and so on.

An unobserved snapshot employing "ZONE" focusing very often results in a surprisingly fine picture. Two symbols, an inverted triangle (#10) and a circle (#11) etched on the outer rotating knob are brought into use for this pleasurable pastime. The triangle is used as a distance setting for close work between roughly 8 feet and 15 feet, and the circle for subjects beyond 15 feet. This practice requires good lighting conditions with lens set at f11.

Depth of  
field  
and zone  
focusing





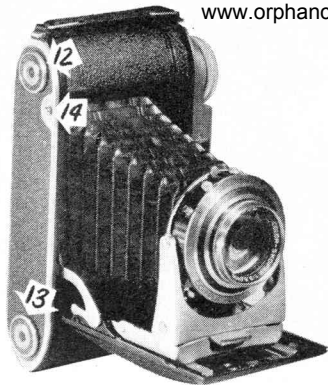
The  
Famous  
*Voigtlander*  
Lenses

Voigtlander optical equipment was well known when photography was still in its infancy, because the very first lenses designed for photographic purposes were Voigtlander lenses.

The Skopar, composed of four elements, combines the utmost sharpness with particularly great resolving power. It is the most popular Voigtlander lens, affording remarkably high performance at a moderate price.

The difference in construction between the Heliar and the Skopar is reflected in their respective prices. Not only is there one more element in the Heliar, but the construction demands a very difficult mounting which, in itself, is an expensive item.

To sum up, the Skopar more than answers the requirements of the average amateur, while the Heliar is the lens "par excellence" for the fastidious and critical worker. Both lenses are coated for even greater efficiency.



Speedy operation is another feature. The opening button (#14) is pressed and the Bessa is partly erected — the trigger shutter release, so cleverly concealed under the baseboard, emerges as if by magic — a downward motion on the baseboard, and presto the camera is ready for action.

Closing the camera requires a slight pressure on the release catch located on the baseboard, and the front folds back quickly and easily.

Two sockets (#12) and (#13) for the use of a tripod and flash gun, or even both, are located for the utmost convenience.

The built-in rangefinder operates just as effectively with the camera closed, and when opened the lens will be accurately set at the proper distance.

The body is covered with sleek, black genuine leather, topped off by a rich satin chrome finish, resulting in an extremely handsome looking instrument. Slim and light, the Bessa can very conveniently be carried in the pocket.

Instantly  
ready  
for  
use



Loading  
is simplicity  
itself

The camera back is opened by pressing the two catches (#15) and (#16). The left spool chamber below the rangefinder knob holds the unexposed roll of film while the right one (#17) carries the empty take-up spool. Both roll holders swing out for convenient loading.

The film winding knob (#18) is geared and works well and smoothly. A feature of the Bessa is the fact that it will accommodate either 620 or 120 with equal ease.

For extra protection in brilliant sunlight, the ruby window (#19) is provided with a built-in safety cover controlled from the outside by a milled disc (#20). After the final exposure has been made, and the film turned until the backing paper has passed the film window, the winding knob is pulled out until the inside key is disengaged from the spool.



Voigtlander filters are available in both light and medium yellow. Focar attachments open up the field of close-up photography. The (#1) Focar permits working at distances from 17" to 32", while the (#2) can be used for close-ups from 12" to 17". The Voigtlander sunshade is a particularly useful accessory, serving to hold back extraneous rays.

## 2 1/4 x 3 1/4 Rangefinder Bessa - Model 2

\*RFS with Color-Skopar f3.5 lens .

\*RFH with Color-Heliar f3.5 lens .

Eveready Carrying Case . . . . .

37mm. Yellow filter light or medium

37mm. Focar lens, #1 or #2 . . . . .

37mm. Sunshade . . . . .

\*Code Designation: RFS for camera with Skopar lens  
RFH for camera with Heliar lens

Practical  
*Voigtlander*  
Accessories

brings you the newest  
and the most  
sensational member  
of the  
**Voigtländer**  
family.

